



U.S. PACIFIC ISLANDS BULLETIN

A Quarterly Newsletter about U.S. Post Offices in the Pacific area (including Guam, the Commonwealth of the Northern Mariana Islands, American Samoa and the successor administrations in the Caroline, Marshall and Line islands)

ISSUE NUMBER FORTY FOUR

MARCH, 2004

TA'U, MANU'A ISLANDS, AMERICAN SAMOA 1905 TO 1915

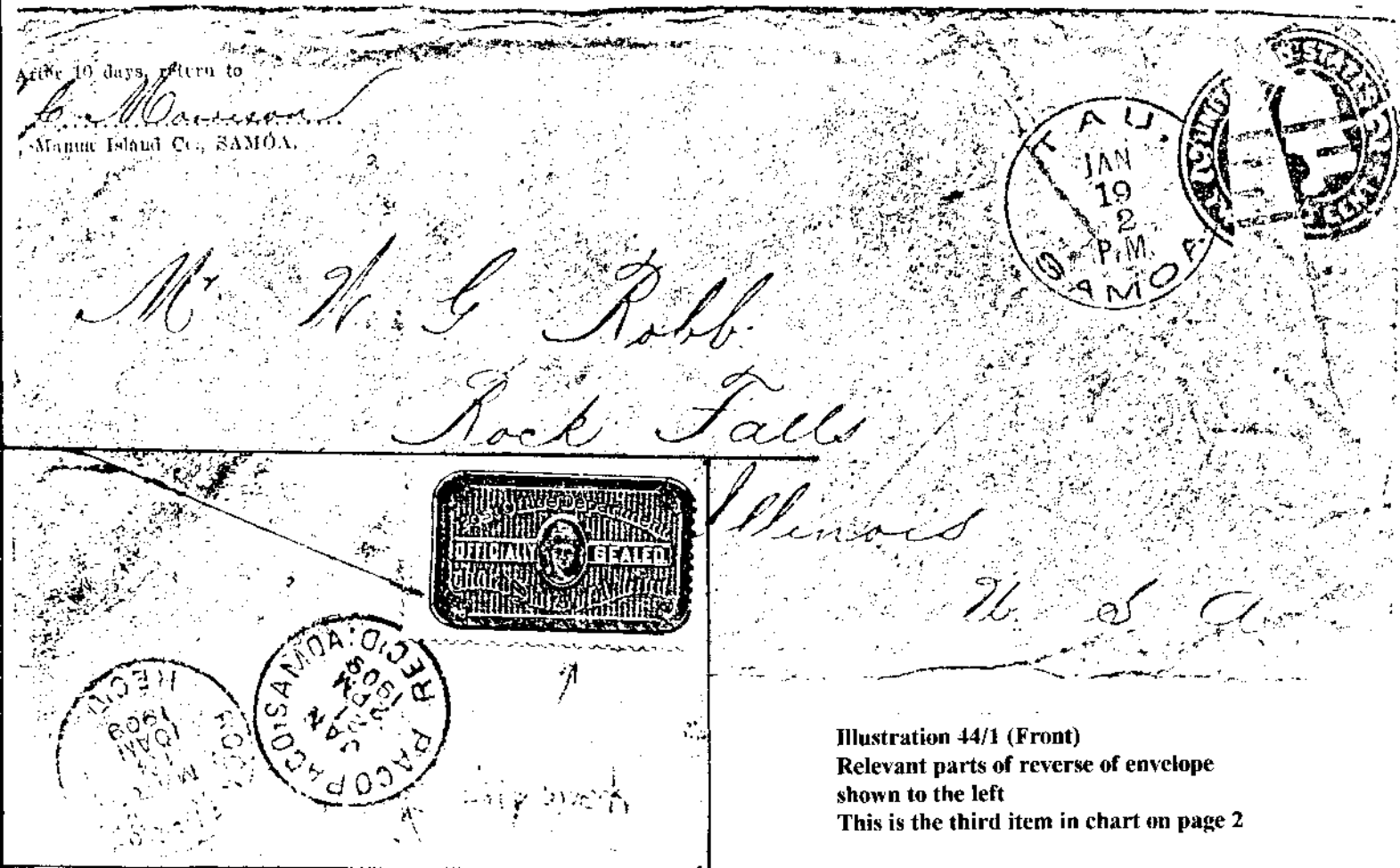


Illustration 44/1 (Front)
Relevant parts of reverse of envelope
shown to the left
This is the third item in chart on page 2

An article with this title appeared in "Bulletin" # 34 - September 2001. Since that article appeared readers have supplied more information on this subject including three illustrations of covers bearing the cancellation used by Ta'u post office during this period. (Murphy Ta'u Fig. 2.1)

I have produced the chart on Page 2 incorporating all the information known to me. None of this is new - all has been published previously in other publications but the chart attempts to pull it together.

Jack R. Hughes writing in the "Fellowship of Samoan Specialists" (See Source 3 below the chart) quotes the following from U.S. dealer Howard Lee writing to him in 1996. "I believe there to be 10 to 15 postcards with the one cent rate extant - the bulk with the 23 June 1909 postmark, all the cards I've seen are addressed to either Robb or Clements. I've also handled 2 covers - one to Apia with a 5c stamp and one a 2-cent envelope to the U.S.". Howard Lee also supplied Mr. Hughes with photocopies of three picture postcards all dated Jun 23 1909 PM. According to Mr. Hughes one postcard illustrated an unfinished fale with the inscription "Samoaner House im Bau", the second pictured three Samoan belles and was inscribed "Greetings from Samoa" while the third showed a town scene of Apia. (These appear to be additional to those in the chart below with the possible exception of the "Samoan Belles", which may be the one with the "Dance" inscription.)

Mr. Hughes also refers to a letter from Jon E. Krupnick of Fort Lauderdale Fla. who mentions a postcard (Date not given) addressed to Clements inscribed by Morrison "Ready for the Feast Baked Pig - the Samoan National Dish". This also appears to be additional to the items listed in the chart on page 2.

The chart lists the 11 covers/postcards photocopies of which I've see - in addition five additional items are described above. On the basis of Howard Lee's estimate of 10 to 15 postcards with the one cent rate there are at least another 5 items in circulation.

Ta'u Manu'a Islands (Continued)

DATE ON POSTMARK	ADDITIONAL POSTMARKS	POSTCARD OR ENVELOPE	SENDER	ADDRESSED TO	SOURCE
Jan 25 9 AM	Not Known	Envelope	Tuinanua *	Miss Alberta Morgan *	1 & 3
* According to Source 3 Murphy Fig. Tau 2.1 was sourced from this cover Malden, Mass.					
Mar 30 6 ?M	Pago Pago ? 1908 Sterling Ill.	Envelope	C.J. Russell C.J. Russell	?? Sterling Ill	2
Jan 19 2 PM	Pago Pago Jan 21 1909 Rock Fall Ill. Mar 13 1909	Envelope	A. A. C. Morrison Ta'u (Postmaster)	W.G. Robb Rock Falls Ill.	3 & 5
Mar 22 6 PM	Pago Pago Mar. 25 1909 Suva Fiji Apr. 13 1909	Envelope	A.A.C Morrison Ta'u (Postmaster)	Hedeman, Evens & Co. Suva, Fiji	2
Jun 23 1909 PM	Not Known	Postcard*	Handwriting indicates A.A.C. Morrison	J.R. Clements Binghamton NY	2
*Inscription reads "Dance/1st part/Later on the/ performers stand/but much of the/ business throughout/ is dance by the/ hands"					
Jun 23 1909 PM	Not Known	Postcard *	Handwriting indicates A.A.C Morrison + signed AAC	W.G. Robb Rock Falls Ill.	4
* Inscription reads "A Breadfruit Tree"					
Jun 23 1909 PM	Not Known	Postcard *	Handwriting indicates A.A.C. Morrison	W.G. Robb Rock Falls Ill	2
* No Inscription					
Jun 23 1909 PM	Apia 2. 7. 09	Envelope	Not Known	Missi Olive F.F.I Apia Upola	3
Jun 23 1909 PM	Not Known	Postcard *	Handwriting suggests A.A.C. Morrison	W.G. Robb Rock Fall Ill	5
*Illustration "A Samoan Beauty" No Inscription					
Jun ? 1910 AM	Cut Square	Cut Square	Cut Square	Cut Square	2
Oct 1 1910 PM	Cut Square	Cut Square	Cut Square	Cut Square	2

SOURCE OF ILLUSTRATION

1. Robert T. Murphy in his book "A Postal History /Cancellation Study of the U.S. Pacific Islands"
 2. Jack R. Hughes - article "Tau, Samoa Circular Date Stamp" (Fellowship of Samoa Specialists Vol. 10 No. 2 June 1994)
 3. Jack R. Hughes - article "Tau , Samoa Update" (Fellowship of Samoa Specialists Vol. 12 No. 1)
 4. Michael Dattolico -article "That Mysterious "Tau" Samoa Doan" (La Posta May 2001 Vol 32, # 2)
 5. Photocopies of items offered for sale at various times by dealers/auction houses/e-Bay supplied by Howard Lee & Dave Trutwin.
- (I am grateful to John P. Wynns and Terence Hinds for supplying copies of the Jack R. Hughes & Michael Dattolico articles)

STRANGERS IN THEIR OWN LAND BY FRANCIS X. HEZEL SJ is an authoritative and engaging account of a succession of colonial regimes in the Mariana, Marshall and Caroline Islands drawing upon a broad range of published and archival sources as well as his own considerable knowledge of the region according to John Barker of the CNMI Public Affairs Dept. . . . Published by the University of Hawaii Press and Micronesia Seminar the book costs \$25 and is available from Micronesia Seminar, P.O. Box 160, Pohnpei FM 96940 or the University of Hawaii press.

JAPANESE POST OFFICE PHOTO

The Micronesia Seminar organisation has added another "Photo Album" to their website - <http://www.micsem.org/photos.htm>. This illustrating the "Rise of Towns" in the Marshall, Mariana & Caroline islands during the Japanese administration. One of the photos shows the Japanese Post Office at Koror in the 1930's.

FEDERATED STATES OF MICRONESIA

PINGELAP POHNPEI FM 96941: NY Dealer Steven Zirinsky (P.O. Box 49, Ansonia Station NY, NY 10023) has shown me a cover from this office cancelled by the first Pingelap postmark I've seen since 1996. See **Illustration 44/2**.

The cancellation is in a blue-black ink but reproduces poorly against the stamp. The postmark reads "PINGELAP POHNPEI/FSMPO FM 96941" and is dated **Apr. 13 2003**. It is addressed to Tonga and has a Tonga P.O. backstamp of **25 July 2003**. The sender's address appears to be an individual using P.O. Box No. 9 - the Peace Corps Office P.O. Box number in Kolonia, Pohnpei. The envelope has a pen notation 47c but only a 37c stamp was affixed. I assume the correct rate is 80c. Where was the letter between April and July? Slow sea mail from Pingelap to Pohnpei? Or did the postal clerk forget to alter the date on the date-stamp?



Illustration 44/2

Jean-Jacques Laurent also reports the same date-stamp used on a commercial cover from Pingelap to Tahiti dated Aug 22 2003. This cover also bears the undated spray on transit markings of Honolulu and Los Angeles.

On 6 Feb 2004 I received a philatelic cover from Pingelap postmarked by what appears to be the same date-stamp dated Jan 27 2004. The cover has the Honolulu 02/02/04 spray on transit markings. This cover was as a result of an enquiry I sent to Pingelap on June 28th 2003. (See **Illustration 44/3** below)

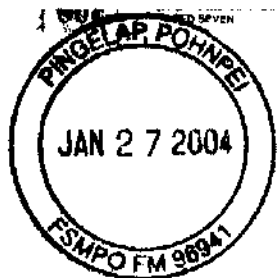


Illustration 44/3

This may of course be a duplicate postmark applied at the Philatelic Bureau in Pohnpei but it does appear to be identical to **Illustration 44/2** and though the ink used is darker than on Steven Zirinsky's cover it does have a slight steel blue tinge.

LELU KOSRAE FM 96944: **Illustration 43/21** showed a partial impression of a previously unreported date-stamp from this office. No year slug was present. Jean-Jacques Laurent reports the same date-stamp showing the date as

? Nov and with 03 written in by hand. I wrote to the Postmaster asking for a clear impression of this date-stamp which arrived here on 28th January 2004 and showed the date as Jan 21 but without the year. As this is a clear impression of the date-stamp I reproduce it below, for the record, as **Illustration 44/4**.

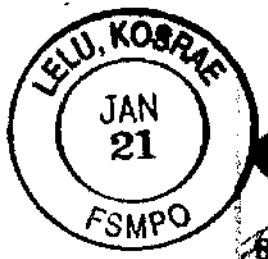


Illustration 44/4

POHNPEI FM 96941: I've been shown two covers addressed to the U.K. Both were postmarked by **Illustration 34/7** (the current APDS). The first cover was dated Feb 4 2004. The stamp was a 37c Apache helicopter commemorative. The cover was returned to the sender for additional postage using the standard U.S. type "Returned for.....additional postage. When remailing cross out this notice or paste stamps over it" rubber-stamp. A 40c fish definitive + 3c shell definitive were applied and the cover was reposted on Feb 20 2004 receiving a further impression of the **Illustration 34/7** APDS. Both postmarks are in red and despite the cover falling within the 1 oz weight limit, and therefore not being bulky, the postmarks showed the multiple surrounding rings reported)bringing the size of the impression in excess of 4 cm.

The second cover was posted on Feb 17 2004 and had \$2 current bird definitive + 3 x 20c fish definitives making postage of \$2.60 - the 3-oz rate to Australia & NZ. The 3-oz rate to the UK is \$2.40. The postmark is in red.

MIDWAY ISLAND - AIRPORT TO RE-OPEN?

The Pacific Basin Development Council is working with the Federal Aviation Administration in the deployment of at least a partial or "bare-boned" staffing to open up the Midway airport for emergency landings, CNMI Gov. Juan N. Babauta reported. (Saipan Tribune 1.2.04)

REPUBLIC OF THE MARSHALL ISLANDS:

MAJURO MH 96960: **Illustration 43/18** in the December 2003 edition of the "Bulletin" showed an APDS with the inscription "USPS" (instead of "MIPS") cancelling the stamps on a commercial cover in the stock of N.Y. dealer Steven Zirinsky. Steven had e-mailed a copy of the cover to me which, on printing out, had appeared larger than I considered accurate. Bernd Neuhaus has seen the actual cover on which **Illustration 43/18** appeared and reports that the colour of the cancellation is Magenta. He can also confirm that the size is 3 cm as in **Illustration 43/18**. Bernd also feels that the letters of the inscription are slightly smaller than those of any other APDS currently in use at Majuro P.O.

This APDS has now appeared on a philatelic cover dated Dec 19 2003 and with the date completely reversed in relation to the inscription. The colour of the ink used on this occasion was bright red. For the record it is shown here as

Illustration 44/6.

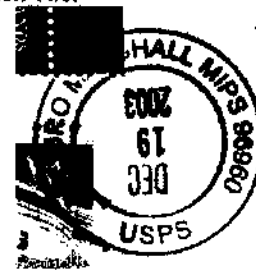


Illustration 44/5

KWAJALEIN APO AP 96555: Bernd Neuhaus has sent me a scan of a new "DIRECTORY SERVICE GIVEN" date-stamp from Kwajalein dated 14 Nov 2003. This contained the misspelling "DIRCETORY" (See **Illustration 44/6** below). It has also been reported on Feb 26 2004.



Illustration 44/6

The date-stamp appears on an ordinary undelivered letter also bearing **Illustration 43/19** dated Nov 11 2003.

AMERICAN SAMOA

OFU MANU'A BR. AS 96799: Jean-Jacques Laurent reports receipt of a cover cancelled by **Illustration 32/4** dated Nov 21 2003

COMMONWEALTH OF THE NORTHERN MARIANA ISLANDS:

ROTA MP 96951: A new 4-Bar has been reported on a Philatelic Cover dated Feb 2 2004. This is shown below as **Illustration 44/7**. The bars are longer than is usual on most modern 4-Bars. 3-cm at the longest point as opposed to the more usual 2-cm or so. The cover also had the APDS **Illustration 37/20** in red.

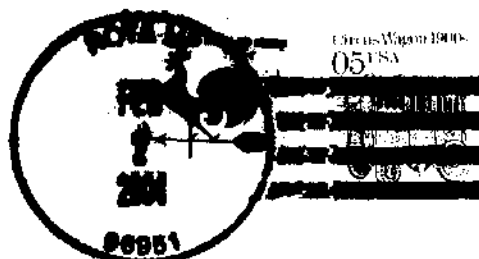


Illustration 44/7

SAIPAN MP 96950: **Illustration 44/8** on Page 4 shows the cancellation on a cover I sent to San Vicente Post Office recently. I have not seen this APDS previously. The legend reads "SAIPAN MP 96950-9978/USPS". David Trutwin suggested in an earlier edition of the "Bulletin" that postal markings with the ZIP Code

including 9998 were supplied for philatelic purposes or perhaps for use of the Postmaster. Since there was no note with the cover it is not clear if San Vicente has closed or if the cover was cancelled in error at Saipan.

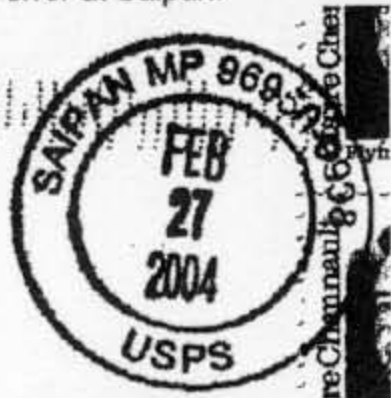


Illustration 44/8

CLOSURE OF JOHNSTON ATOLL P.O.

Jean-Jacques Laurent tells me that a cover he sent to APO AP 96558 on 19th November 2003 was forwarded by the Post Office to the "Johnston Atoll Health Clinic, 11600 Stark Rd, Stockton, Utah 84071-9712, USA. The Medical Director there mailed the cover back with a note saying the Post Office had closed by the time his mail arrived there and added that it seems all mail addressed to Johnston is forwarded to the clinic in Utah. However a cover I sent out in early December was returned with a yellow label affixed dated 14 Jan 2004 and reading "RETURN TO SENDER/NO FORWARD ORDER ON FILE/UNABLE TO FORWARD" but with no USPS marking or date-stamp.

UPDATING MURPHY

JOHNSTON ATOLL - APO 105 - 1950

Dave Trutwin sent me a photocopy of a postcard offered in a recent auction cancelled by the 4-Bar shown below as **Illustration 44/9**. Bob Murphy writing in "A Postal History/Cancellation Study of the U.S. Pacific Islands" shows as Figure 3.1.3 a similar cancellation which appears to be a tracing rather than a photocopy, and gives only one date of use January 19 1951. The date shown on **Illustration 44/9** is Jul 25 1948. It is clearly a different device from Murphy 3.1.3 since the top bar runs from the "S" of Service rather than the "L" of postal as in Murphy Figure 3.1.3.

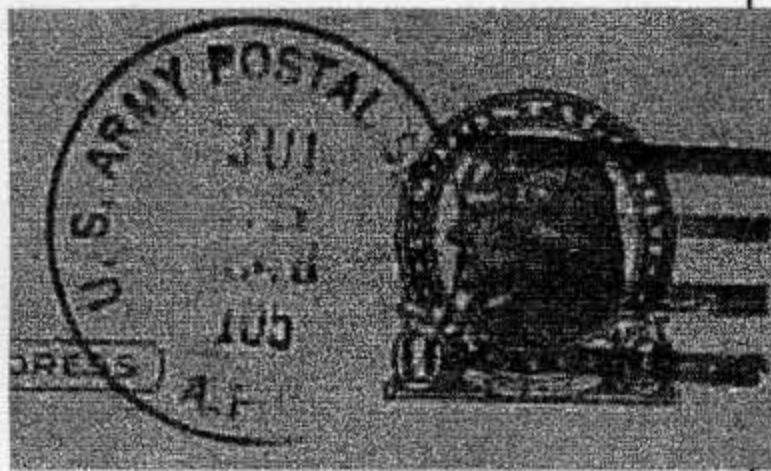


Illustration 44/9

GUAM :

STATION 14: Bulletin 43 included an article on the Numbered Stations of Guam based on items in Dave Trutwin's collection. Dave has sent me a photocopy of a further cover. This has the return (senders) address of Station 14 - See **Illustration 44/10** in the adjoining column. Bob Murphy writing in "A Postal

History/Cancellation Study of the U.S. Pacific Islands" states that Station 14 was never activated. Perhaps not as a Postal Station cancelling mail but it was, on the basis of this cover, activated as a postal address. The cover is addressed to Westinghouse Electric Supply Co. in Los Angeles and is cancelled by a Naval Air Station 4-Bar - Murphy Fig. 1.1 dated 29 SEP 1947. According to Bob Murphy this was used during the military administration of the Post Office, most likely by Navy P.O. 13794.

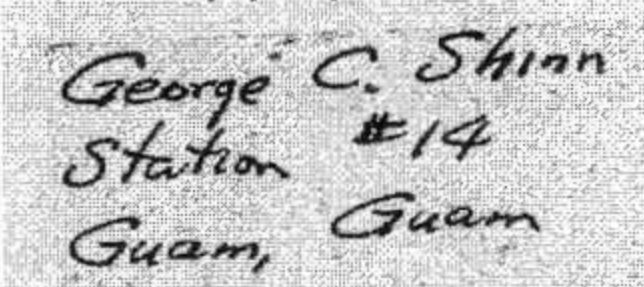


Illustration 44/10

SANTA RITA P.O. CLOSED PERMANENTLY?

In the last edition of the Bulletin I reported the temporary closure on 19th December 2003 of Santa Rita Contract Postal Station so that an audit could be carried out.

According to newspaper reports during February the daughter of the postal contractor pleaded guilty of the theft of \$3,045 in cash, postage and other items from Santa Rita Contract Postal Unit. The thefts started in June 2003 and terminated with the closure of the P.O. in December 2003. The U.S. Postal Inspector for Guam, Craig Hales told the Pacific Daily News that there would no longer be a contract postal unit in Santa Rita and that customers would have to make arrangements with postal units at Agat, Hagatña or Naval Station to pick up mail. Alternatively it was suggested that residents could get a new P.O. Box elsewhere or register for home delivery which was available in the Haya, Lago, Santa Rosa, Pale Ferdinand & Naval Magazine areas amongst others. The Guam Postmaster said that about 200 customers had been affected by the closure. The village Mayor also said that boxes near to the Major's office were available to people living in certain areas.

POSTAL NEWS FROM GUAM

Mongmong-Toto-Maite: Home mail delivery is available to all tri-village residents who wish to receive this service. Those in Red Circle, Mongmong, Ella Circle, South Peperu St. and Toto pipeline by J.Q. San Miguel Elementary School in Toto have not been approved because of hazardous road conditions. House numbers must be verified by the Mayor's office.

Chalon Pago/Ordot: There will be a meeting with the Postmaster concerning home postal delivery in the village. Those whose names were added to the ongoing postal delivery list are encouraged to attend.

Yona: The U.S. postal mail drop box in front of the mayor's office continues to be vandalized & as a result has been removed. Mail may be posted adjacent to the P.O. cluster boxes near to the Mayors office. Tentative plans are in hand to revise mail delivery in the area. (PDN Feb 2004)

YAP RURAL BRANCHES 1968: Michael Sewell sent a photocopy of a cover bearing the postmark shown in the adjoining column as **Illustration 44/11**. Kanifay Rural Branch was one of three Rural Branch Post Offices opened in Yap on

September 16 1968. They were at Kanifay, (Population 254), Map Pop. 475 & Rumung Pop. 205. (Populations in 1974) 4 Bar postmarks are known on philatelic covers from all three offices. Has any reader seen a commercial cover?



Illustration 44/11

I recently came across some correspondence I had with a resident of Saipan in 1970. In mid 1970 she mentioned that she hoped to accompany her husband, a Trust Territory Government employee, on a visit to Yap. I asked her to look out for the three Rural Branches and to post covers for me if she located any of them. In November 1970 she wrote saying that she had been unable to accompany her husband to Yap but that he had asked at the main Yap P.O. about the three Branch Offices. The Postmistress had told him that she kept the Branch Office postmarks as "she did not trust it to be sent there". My correspondent wrote telling me that her husband had prepared some covers for me and the Postmistress had cancelled them with the Branch Postmarks. He told my correspondent that there was a stamp dealer in Yap at the time and the dealer had said that the covers were no use because they were on legal sized envelopes and one was postmarked before the relevant stamp was issued. She promised to send the covers on her husband's return. In May 1971 she sent the covers. Each was cancelled by a 4-Bar date-stamp from one of the offices. Map Sep 30 1970, Kanifay Oct 16 1969 and Rumung Sep 2 1970 - the latter also with a Yap APDS of Sep 3 1970. I guess this was the date the covers were prepared. The date on the Kanifay cover predated the date the stamp was issued. She added that the Postmistress had told her husband that the postal clerks at the Branch offices all had full time jobs in the district centre and brought any mail in daily.

My correspondent had apparently joined her husband in Yap in early 1971 and had met the postal clerk at Rumung. His name was Ambrose Mingifel who was also the X-Ray Technician in charge of the X-Ray Department of Yap hospital and the chairman of the Tourist Commission for Yap. According to Bob Murphy the three offices closed on June 30 1975 so it is possible that the date-stamps were issued to the Rural Branches at a later date.

THE NEXT EDITION OF THE BULLETIN WILL BE IN SEPTEMBER 2004.

I do not expect to be able to produce the Bulletin during the coming summer months. Please keep contributions coming - if the opportunity arises I will recommence publication before September.

The U.S. Pacific Islands Bulletin is issued by E. Baxendale, uspibulletin@hotmail.com